

Cable Tray

Product Description

A cable tray system supports and protects both power and signal cables and facilitates upgrading, expanding, reconfiguring or relocating networks. It is used to support insulated electrical cables used for power distribution, control and communication.

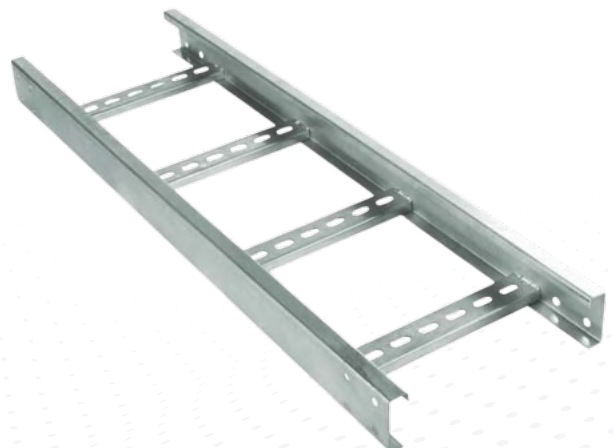
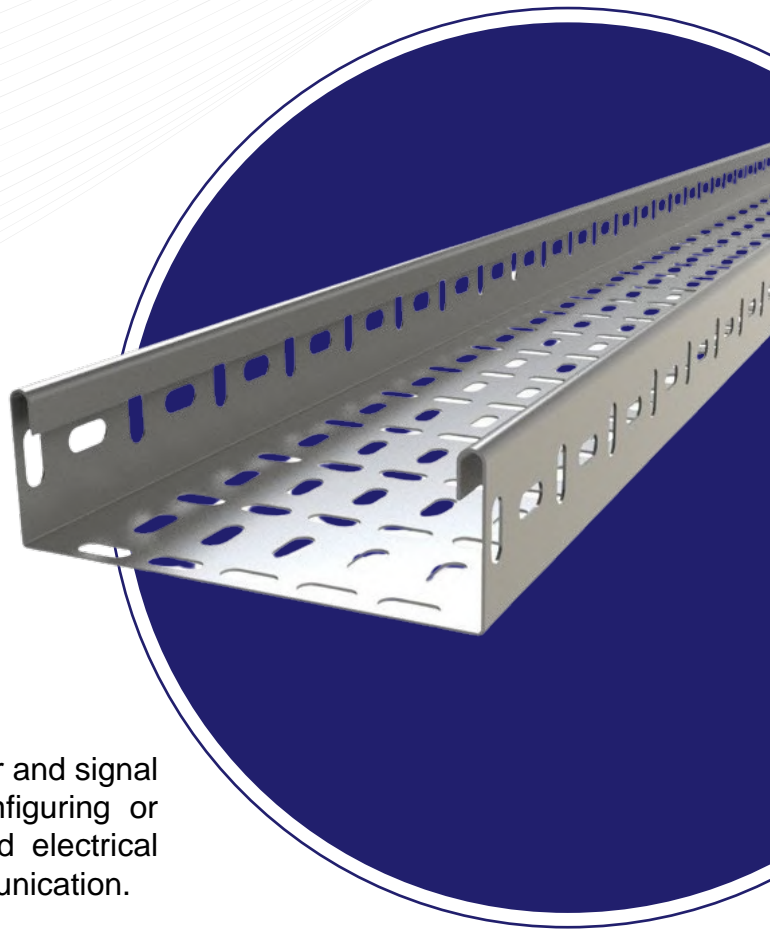
Cable trays are a smart choice instead of open wiring or electrical conduit systems and they're often used in buildings for managing cables. Most of the cable tray systems are open, allowing efficient heat dissipation. Cable trays are capable of supporting all types of wiring, such as High Voltage Power Lines, Power Distribution Cables, Control cables, Telecommunication cables and Fiber Optical Cables. They have different types based on their design and material of Construction.

Types

◆ Ladder Cable Tray

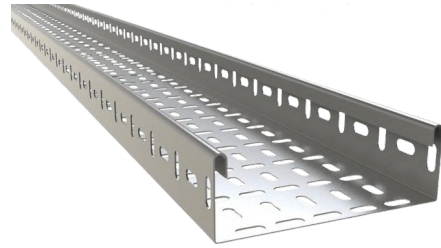
Ladder cable tray has two side rails connected by rungs. This design makes it easy to access the cables from either the top or bottom, which is really helpful for managing them effectively.

Our Ladder tray is light weighted and ranges in different sizes from 100 mm to 1200mm width of cable tray.



◆ **Perforated Cable Tray**

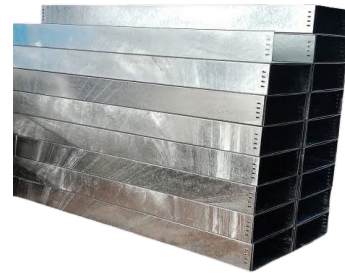
Perforated cable tray has holes in the bottom and side rails for ventilation. It offers better support to cables compared to ladder-type trays



◆ **Solid-bottom Cable Trays**

Solid-bottom Cable trays for fiber-optic cable installations where drooping of cables may affect system performance, solid-bottom (non-ventilated) cable trays are preferred.

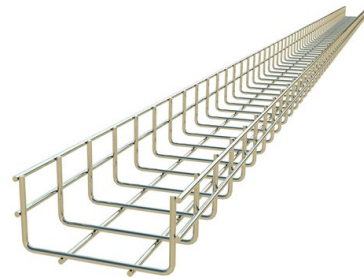
They provide protection against electromagnetic and radio-frequency interference, which is important for maintaining system integrity.



◆ **Wire mesh cable tray**

Wire mesh cable tray is made of stainless steel wires by welding wires together, forming a basket-like mesh.

These are mainly used for low voltage, telecommunication, and fiber optic cables supported on short spans.



Material of Construction

SEPCON Engineering makes cable trays in the following materials:

- ◆ Stainless steel
- ◆ Hot-dip galvanized
- ◆ GI perforated

Stainless steel and hot-dip galvanized trays are gentle on cables and tubes. GI perforated trays are made from galvanized iron sheets, which are coated in zinc to resist rust, making them last longer, even in tough conditions.

Accessories of Cable Tray

Accessories required for cable trays include mounting brackets, connectors, covers, and clamps, enhancing their functionality and ensuring secure cable management solutions. With these accessories, cable trays can be customized and optimized to meet specific project requirements while maintaining efficient cable routing and organization. A few accessories are:

- ◆ **Fasteners:** Securely attach cable trays to mounting surfaces, ensuring stability and reliability in cable management.
- ◆ **Clamps:** Provide additional support and organization by securing cables within the tray.

- ◆ **Bends:** Facilitate changes in direction, optimizing cable routing and minimizing obstruction.
- ◆ **Reducers:** Enable seamless transition between trays of different sizes, enhancing flexibility in tray installation.
- ◆ **T-joints:** Allow branching of cable trays, enabling efficient distribution of cables in multiple directions.
- ◆ **Internal risers:** Elevate cables within the tray, optimizing space and preventing cable entanglement.
- ◆ **External risers:** Extend the height of the tray, accommodating larger cable bundles and facilitating easier access.
- ◆ **Short straight lengths:** Connect different sections of cable trays, ensuring continuity in cable routing.
- ◆ **Coupler plates:** Join adjacent trays together securely, maintaining structural integrity and alignment.
- ◆ **Tray covers:** Protect cables from environmental factors and provide a clean aesthetic finish to the installation.
- ◆ **Tray crosses:** Enable crossing of cable trays, optimizing space utilization in complex installations.
- ◆ **Tray supports:** Provide additional structural support to cable trays, ensuring durability and longevity.
- ◆ **Endcaps:** Seal off the ends of cable trays, preventing debris accumulation and ensuring cable safety.

Advantages

Less expensive: One of the big advantages that using a cable tray has that it costs a lot less than other methods of protecting wiring on the production floor.

Easy Maintenance: Cable are instantly visible for maintenance checks, changing of cables is easy because cables can enter or exit the tray at any point of the system.

Safety: Regular housekeeping is important for safety, as cable trays are often installed in hard to reach places.

We believe that every project is unique, and your cable management solution should reflect that. Our cable trays are fully customizable, allowing you to choose from a range of materials, finishes, and fittings to meet your specific requirements and match the style of your installation.